

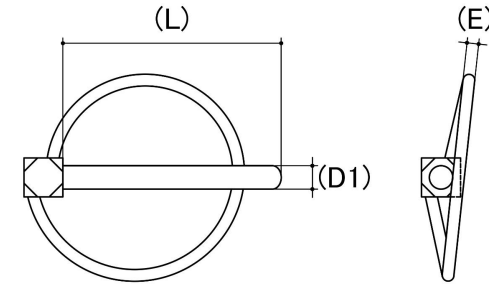
## Linch Pin

**Material:** Stainless Steel

**Class Grade:** A2-70 G304

**Corrosion Protection Level:** Excellent

**Standard:** DIN 6799



*CAD drawings shown for graphic representation only.\**

Size	Length (L) (mm)	Ring Diameter (E) (mm)		Hole Size To Suit (mm)	sku (qfind)
	Nom	Min	Max	Nom	
M4.4	50	2.30	2.40	4.40	37SLP450
M6	57	3.10	3.20	6.00	37SLP657
M7.8	57	3.00	3.10	7.40	37SLP857
M10	57	3.10	3.20	10.60	37SLP1057

**Disclaimer:**

Dimensional data and technical information was obtained from publically available sources and not acquired through standard agencies. It has been completed and compiled for reference purposes only; where discrepancies are found they are subject to change without notice. Bolt & Nut Australia makes no warranties or representations regarding the accuracy and validity of the compiled information and data. Contact the relevant standard authorities for accurate and detailed information.

\* CAD drawings may not reflect diameter, thread length or overall length.

© Bolt & Nut Australia Pty Ltd. All rights reserved.

Version: 18 Mar 2024